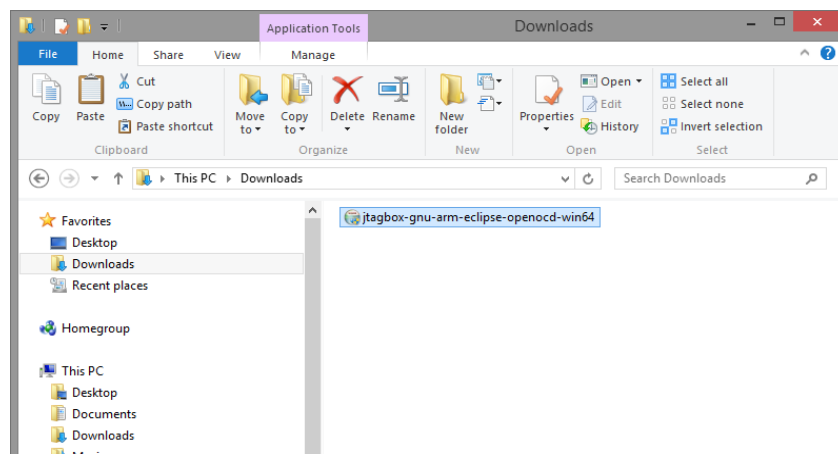
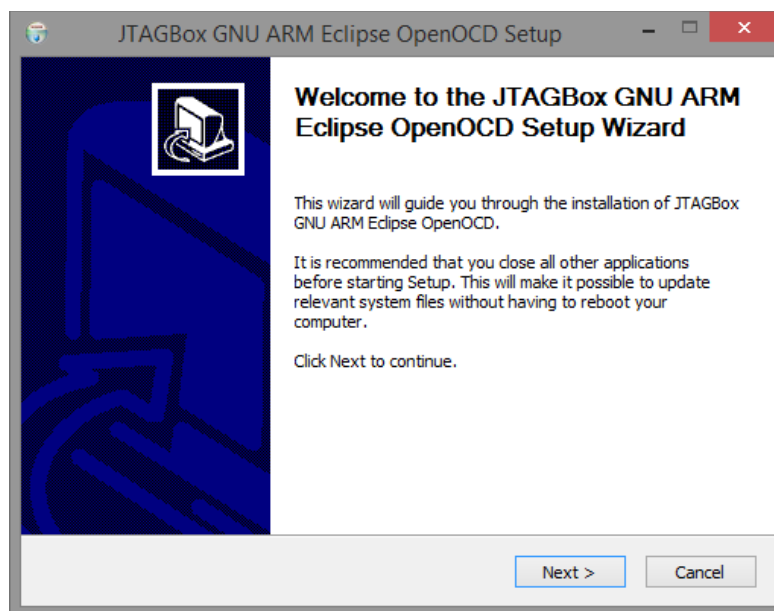


JTAGbox Installation Manual For Windows

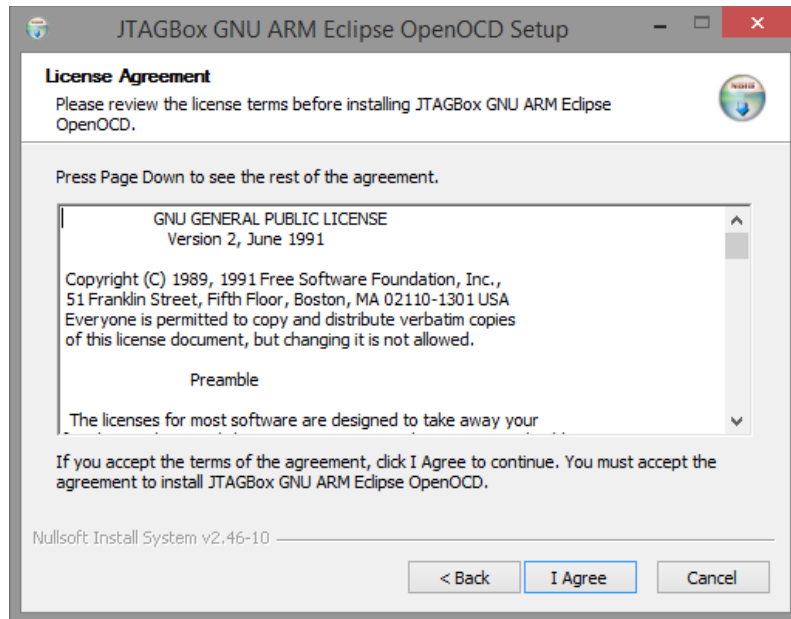
1. Open your web browser and go to www.bitrelle.com/downloads
2. Scroll to the installation packages and click the **JTAGbox Installer Package for Windows 64-bit** or **JTAGbox Installer Package for Windows 32-bit** depending on the OS running on your computer.
3. Connect the JTAGBox to your computer using the Mini-B USB cable.
4. Run the downloaded installer.



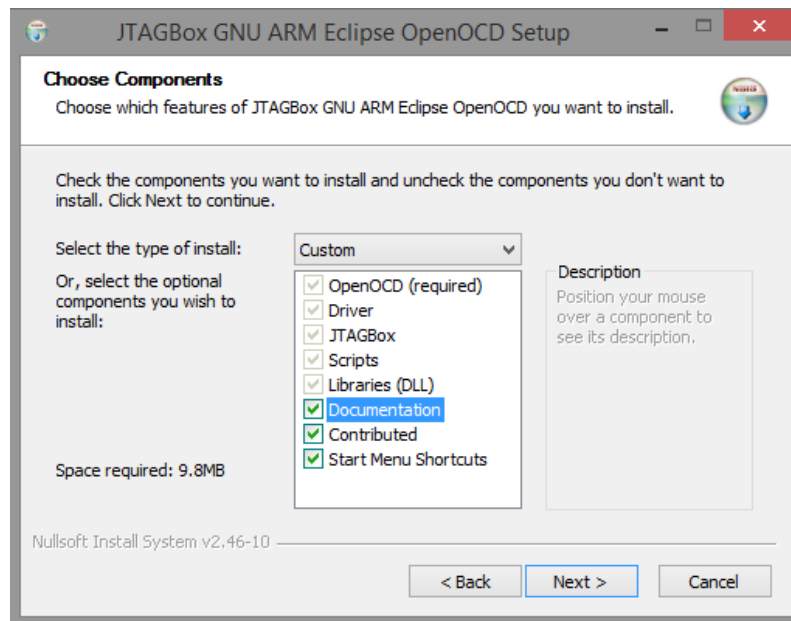
5. Click Next.



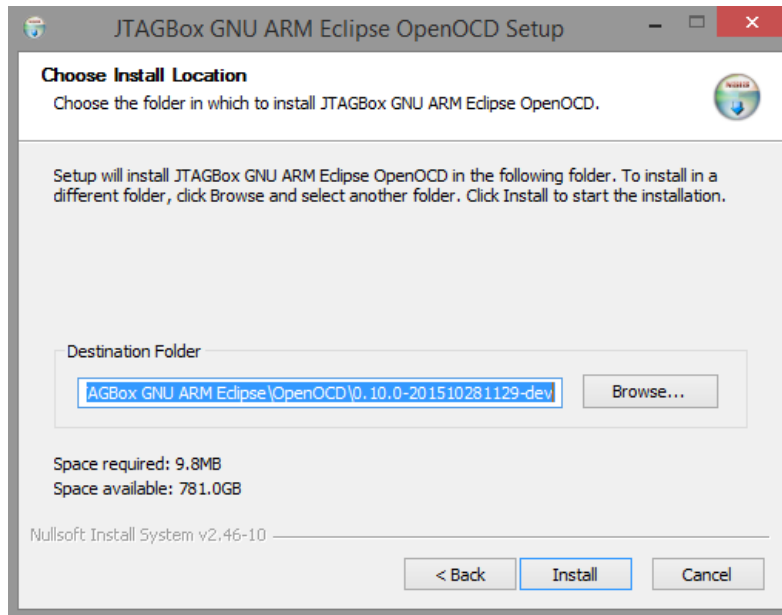
6. Read the license agreement and click I Agree.



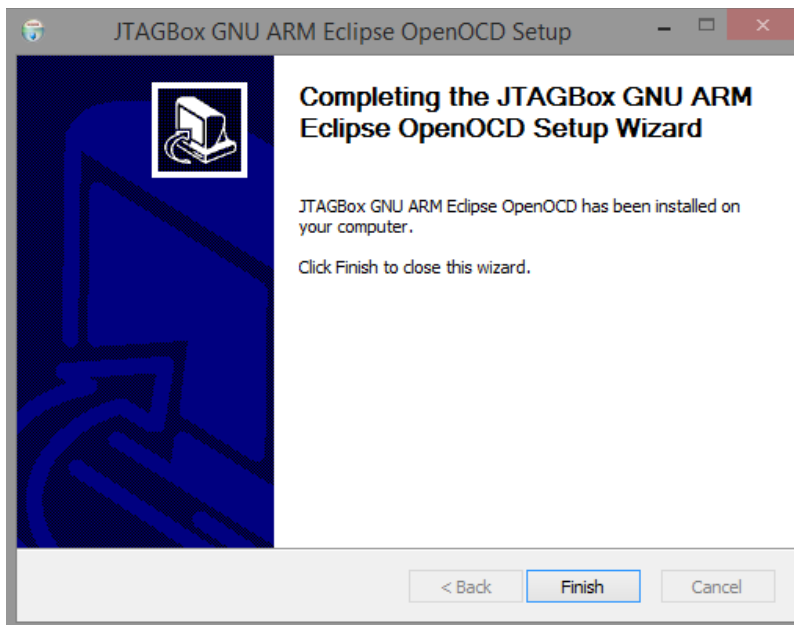
7. Choose the components you want to install and click Next.



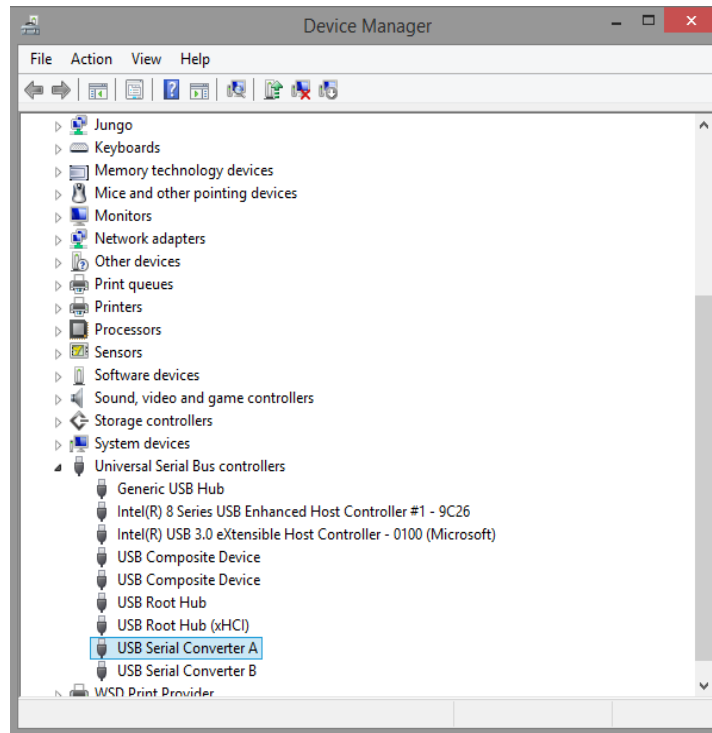
8. Choose Install Location. It is recommended to leave it to the default path. Click Install.



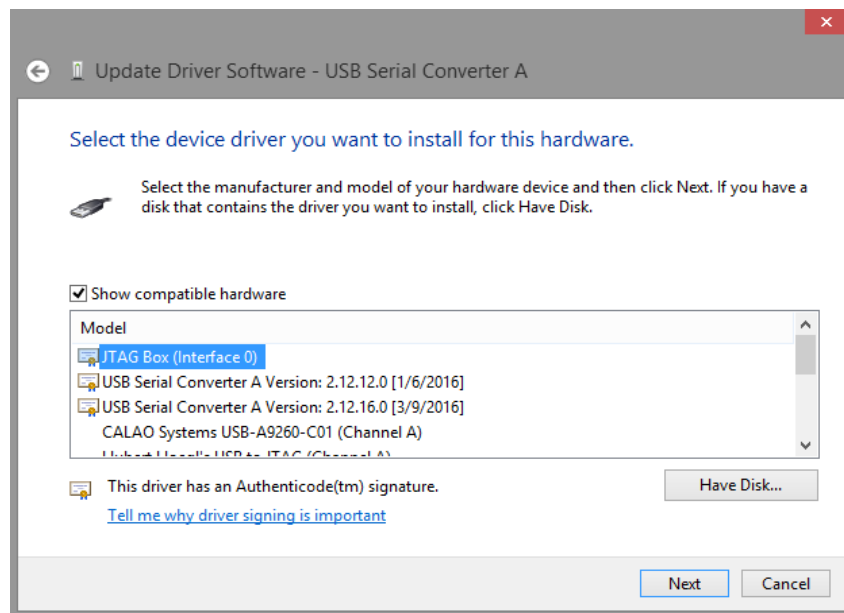
9. After the installation completes, click Finish.



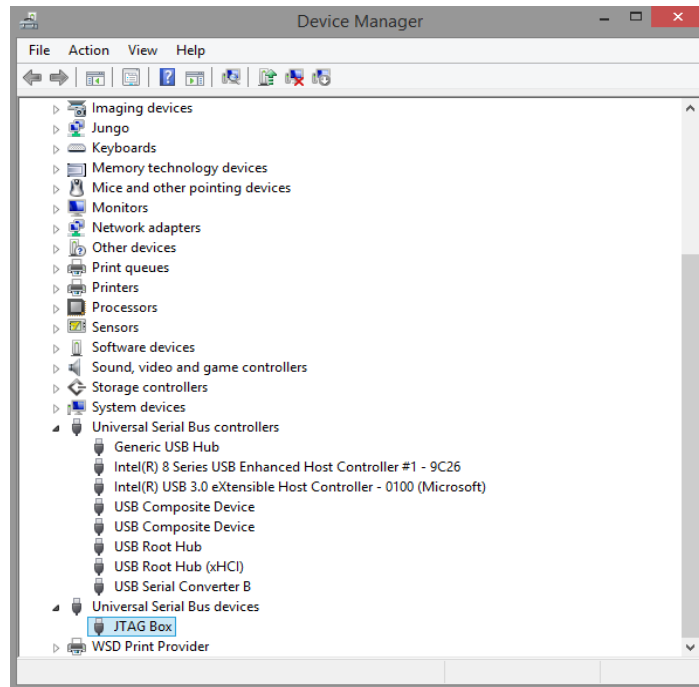
10. Open the device manager and update the device driver by right-clicking the '**USB Serial Converter A**' and then choosing '**Update Driver Software...**'.



On the window that appears, click on '**Browse my computer for driver software**'. On the next window, click on '**Let me pick from a list of device drivers on my computer**'. Choose '**JTAG Box (Interface 0)**' and click next.



It should then appear like the figure below.



11. Open your command prompt and type the following command. It should appear like the figure below.

openocd -f target/lpc2378.cfg -f interface/jtag-box.cfg

```
Command Prompt - openocd -f target/lpc2378.cfg -f interface/jtag-box.cfg
C:\Users\adrian>openocd -f target/lpc2378.cfg -f interface/jtag-box.cfg
GNU ARM Eclipse 64-bits Open On-Chip Debugger 0.10.0-dev-00141-g09aeb96-dirty (2015-10-28-11:39)
Licensed under GNU GPL v2
For bug reports, read
  http://openocd.org/doc/doxygen/bugs.html
init_targets
Warning - assuming default core clock 4MHz! Flashing may fail if actual core clock is different.
trst_and_srst separate srst_gates_jtag trst_push_pull srst_open_drain connect_deassert_srst
adapter_nsrst_delay: 100
Info : auto-selecting first available session transport "jtag". To override use 'transport select <transport>'.
jtag_nrst_delay: 100
adapter speed: 500 kHz
Info : clock speed 500 kHz
Error: JTAG scan chain interrogation failed: all ones
Error: Check JTAG interface, timings, target power, etc.
Error: Trying to use configured scan chain anyway...
Error: lpc2378.cpu: IR capture error; saw 0x0f not 0x01
Warn : Bypassing JTAG setup events due to errors
Info : Embedded ICE version 15
Error: unknown EmbeddedICE version (comms ctrl: 0xffffffff)
Info : lpc2378.cpu: hardware has 2 breakpoint/watchpoint units
Warn : ThumbEE -- incomplete support
```

Notice that the last line of the message from openocd says 'Warn : ThumbEE – incomplete support'. That is so if you don't have a target MCU connected to your JTAGbox.